


- S0-00-00 COVER SHEET
- S0-00-11 CONCRETE SCHEDULES
- S0-01-11 SLAB & FOOTING DETAILS SHEET 1
- S0-01-12 SLAB & FOOTING DETAILS SHEET 2
- S0-01-13 SLAB & FOOTING DETAILS SHEET 3
- S0-01-14 SLAB & FOOTING DETAILS SHEET 4
- S0-01-15 SLAB & FOOTING DETAILS SHEET 5
- S0-02-31 CONCRETE SUSPENDED SLAB & COLUMN DETAILS SHEET 1
- S0-02-32 CONCRETE SUSPENDED SLAB & COLUMN DETAILS SHEET 2
- S0-03-11 STEEL DETAILS SHEET 1
- S0-03-12 STEEL DETAILS SHEET 2
- S0-03-13 STEEL DETAILS SHEET 3
- S0-03-14 STEEL DETAILS SHEET 4
- S0-03-15 STEEL DETAILS SHEET 5
- S0-03-16 STEEL DETAILS SHEET 6
- S0-03-17 STEEL DETAILS SHEET 7
- S0-03-18 STEEL DETAILS SHEET 8
- S0-04-11 CONCRETE PANEL DETAILS SHEET 1
- S0-04-12 CONCRETE PANEL DETAILS SHEET 2
- S0-04-13 CONCRETE PANEL DETAILS SHEET 3
- S0-04-21 MASONRY BLOCKWALL DETAILS
- S1-01-01 FOOTING SETOUT PLAN
- S1-01-11 SLAB & FOOTING PLAN
- S1-01-21 EXTERNAL PAVEMENT PLAN
- S1-03-11 ROOF FRAMING PLAN
- S1-03-21 PURLIN FRAMING PLAN
- S1-04-11 ELEVATIONS & SECTIONS SHEET 1
- S1-04-12 ELEVATIONS & SECTIONS SHEET 2
- S1-04-13 ELEVATIONS & SECTIONS SHEET 3
- S2-01-11 OFFICE 1 SLAB & FOOTING PLANS
- S2-02-21 OFFICE 1 FIRST FLOOR GA & REINFORCEMENT PLANS
- S2-03-11 OFFICE 1 FRAMING PLANS
- S2-04-11 OFFICE 1 ELEVATIONS & SECTIONS

CLIENT	 <small>1/54 Vernon Tce, Teneriffe, QLD 4005 tungstenstructures.com.au ABN: 33 605 483 403</small>	<table border="1" style="width: 100%; border-collapse: collapse;"> <thead> <tr> <th style="width: 5%;">Rev</th> <th style="width: 60%;">Issue Details</th> <th style="width: 15%;">Issued</th> <th style="width: 10%;">Date</th> </tr> </thead> <tbody> <tr><td> </td><td> </td><td> </td><td> </td></tr> <tr><td> </td><td> </td><td> </td><td> </td></tr> <tr><td> </td><td> </td><td> </td><td> </td></tr> <tr><td> </td><td> </td><td> </td><td> </td></tr> <tr><td> </td><td> </td><td> </td><td> </td></tr> <tr><td> </td><td> </td><td> </td><td> </td></tr> </tbody> </table>	Rev	Issue Details	Issued	Date																									<table border="1" style="width: 100%; border-collapse: collapse;"> <thead> <tr> <th style="width: 100%;">PROJECT</th> </tr> </thead> <tbody> <tr> <td> </td> </tr> <tr> <td>Drawn: </td> </tr> <tr> <td>Checked: </td> </tr> <tr> <td>Approved: Vince Williams R.P.E.Q. 10145 On Behalf Of Tungsten Structures</td> </tr> </tbody> </table>	PROJECT		Drawn:	Checked:	Approved: Vince Williams R.P.E.Q. 10145 On Behalf Of Tungsten Structures	<p style="font-size: 24pt; margin: 0;">CONSTRUCTION</p> <p style="margin: 5px 0 0 0;">COVER SHEET</p> <p style="margin: 5px 0 0 0;">SCALE AS NOTED AT A1 REV</p> <p style="font-size: 24pt; margin: 0;">S0-00-00</p>
Rev	Issue Details	Issued	Date																																		
PROJECT																																					
Drawn:																																					
Checked:																																					
Approved: Vince Williams R.P.E.Q. 10145 On Behalf Of Tungsten Structures																																					

PAD FOOTINGS							
MARK (PF)	LENGTH (mm)	WIDTH (mm)	DEPTH (mm)	REINFORCEMENT			ALTERNATE REINFORCEMENT
				MAIN BARS	PLACEMENT	COMMENTS	DOSE OF DRAMIX 4D 65/60BG FIBRE (kg/m3)
600*600*400D	600	600	400	N16-200	EACH WAY, TOP & BTM	'U' BARS	25
800*2200*400D	800	2200	400	N16-200	EACH WAY, TOP & BTM	'U' BARS	30
1000*1000*400D	1000	1000	400	N16-200	EACH WAY, TOP & BTM	'U' BARS	25
1200*1200*400D	1200	1200	400	N16-200	EACH WAY, TOP & BTM	'U' BARS	25
1400*1400*400D	1400	1400	400	N16-200	EACH WAY, TOP & BTM	'U' BARS	25
1600*1600*400D	1600	1600	400	N16-200	EACH WAY, TOP & BTM	'U' BARS	30
2000*2000*400D	2000	2000	400	N16-200	EACH WAY, TOP & BTM	'U' BARS	30
2400*2400*500D	2400	2400	500	N16-200	EACH WAY, TOP & BTM	'U' BARS	-
2600*2600*600D	2600	2600	600	N16-200	EACH WAY, TOP & BTM	'U' BARS	-
2600*2800*400D	2600	2800	400	N16-200	EACH WAY, TOP & BTM	'U' BARS	-
2750*2750*400D	2750	2750	400	N16-200	EACH WAY, TOP & BTM	'U' BARS	-

NOTES: PAD FOOTINGS SUPPORTING CONCRETE COLUMNS REQUIRE CONVENTIONAL REINFORCEMENT

STRIP FOOTINGS							
MARK (SF)	WIDTH (mm)	DEPTH (mm)	REINFORCEMENT - PLACED ALONG SF		REINFORCEMENT - PLACED ACROSS SF		
			MAIN BARS	PLACEMENT	MAIN BARS	PLACEMENT	COMMENTS
450*400D	450	400	3N12	TOP & BTM	N12-300	PERIMETER	CLOSED LIGS
600*400D	600	400	3N12	TOP & BTM	N12-300	PERIMETER	CLOSED LIGS

SLAB ON GROUND						
MARK	THICKNESS (mm)	EDGE THICKENINGS		MAIN REINFORCEMENT		COMMENTS
		DEPTH (mm)	MESH	PLACEMENT	EDGE TRIMMERS	
125	125	-	SL82	BTM	N12	
125*	125	-	SL82	TOP	N12	RAFT SLAB
150	150	-	SL82	BTM	N16	PUMP ROOM
160F	160	-	30kg/m3 DRAMIX 3D65/60BG FIBRE OR 20kg/m3 DRAMIX 4D80/60BG FIBRE OR 27kg/m3 SIKA NOVOCON HE1060HT FIBRE OR 27kg/m3 TWINTEC AFT1060HT FIBRE			WAREHOUSE
160R	160	200	SL92	BTM	N16	EXTERNAL
250	250	-	SL102	TOP & BTM	N16	TANK SLAB

NOTES:
1. EXTERNAL PAVEMENTS - EDGE THICKENINGS REQUIRED AT FREE SLAB EDGES ABUTTING LANDSCAPED OR ASPHALT AREAS ONLY

BLOCKWALLS (BW)						
MARK (BW)	THICKNESS (mm)	VERTICAL REINFORCEMENT		HORIZONTAL REINFORCEMENT		COMMENTS
		BARS	PLACEMENT	BARS	PLACEMENT	
190(1)	190	N16-200	SOIL SIDE	N16-400	CENTRAL	LOADING DOCK WING WALLS
190(2)	190	N16-200	STARTERS TO SOIL SIDE, MAIN BARS CENTRAL	N16-400	CENTRAL	LOADING DOCK WING WALLS

CONCRETE PANELS (CP)					
MARK (TP)	THICKNESS (mm)	REINFORCEMENT			ADDITIONAL REINFORCEMENT
		MESH	PLACEMENT	EDGE TRIMMERS	
150	150	SL82	CENTRAL	N16	REFER ELEVATIONS

CONCRETE COLUMNS (CC)						
MARK (CC)	LENGTH (mm)	THICKNESS (mm)	VERTICAL REINFORCEMENT		HORIZONTAL LIGATURES	
			BARS	PLACEMENT	BARS	COMMENTS
600*250	600	250	8N28	REFER TYP SECTION	2N10-250	REFER TYP COLUMN SECTION FOR LIG SETOUT
750*300	750	300	8N24	REFER TYP SECTION	2N10-250	REFER TYP COLUMN SECTION FOR LIG SETOUT
1000*300	1000	300	12N24	REFER TYP SECTION	3N10-250	REFER TYP COLUMN SECTION FOR LIG SETOUT

DOWEL JOINTS (DJ)					
MARK	SHAPE	DOWELS			COMMENTS
		SIZE (mm)	LENGTH (mm)	SPACING (mm)	
DJ1	SQUARE	20	400	450	
DJ2	SQUARE	16	400	450	
ADJ	DIAMOND	10	-	450	C/W DANLEY HYPER ARMOURMATE
EDJ1	SQUARE	20	400	450	

NOTES:
1. MAY SUBSTITUTE SQ16 & SQ20 DOWELS FOR 6mm DIAMOND DOWELS AT 450 CRS. SQ25 DOWELS FOR 10mm DIAMOND DOWELS AT 450CRS. SQ32 DOWELS FOR 20mm DIAMOND DOWELS AT 500 CRS.
2. FINAL DOWEL JOINT LOCATIONS ARE TO BE COORDINATED WITH RACKING SUPPLIER.
3. ALL EXTERNAL JOINTS, INCLUDING AT EXTERNAL DOORWAYS, TO BE GALVANISED.
4. ALL JOINTS TO BE C/W DOWEL SLEEVES TO ALLOW MOVEMENT IN TWO DIRECTIONS.

GROUND BEAM (GB)				
MARK (GB)	WIDTH (mm)	DEPTH (mm)	MAIN REINFORCEMENT	
			MESH	PLACEMENT
150*650 D	150	650	SL82	CENTRAL C/W N12 TRIMMERS TOP & BTM

CONCRETE BEAMS (CB)		
MARK (CB)	WIDTH (mm)	DEPTH (mm)
1200*500D	1200	500
1800*500D	1800	500


NOTES:
1. REFER PLANS FOR ALL MAIN BEAM REINFORCEMENT
2. REFER PLANS AND BEAM TIE NOTATION TABLE FOR LIG SIZES AND SETOUT

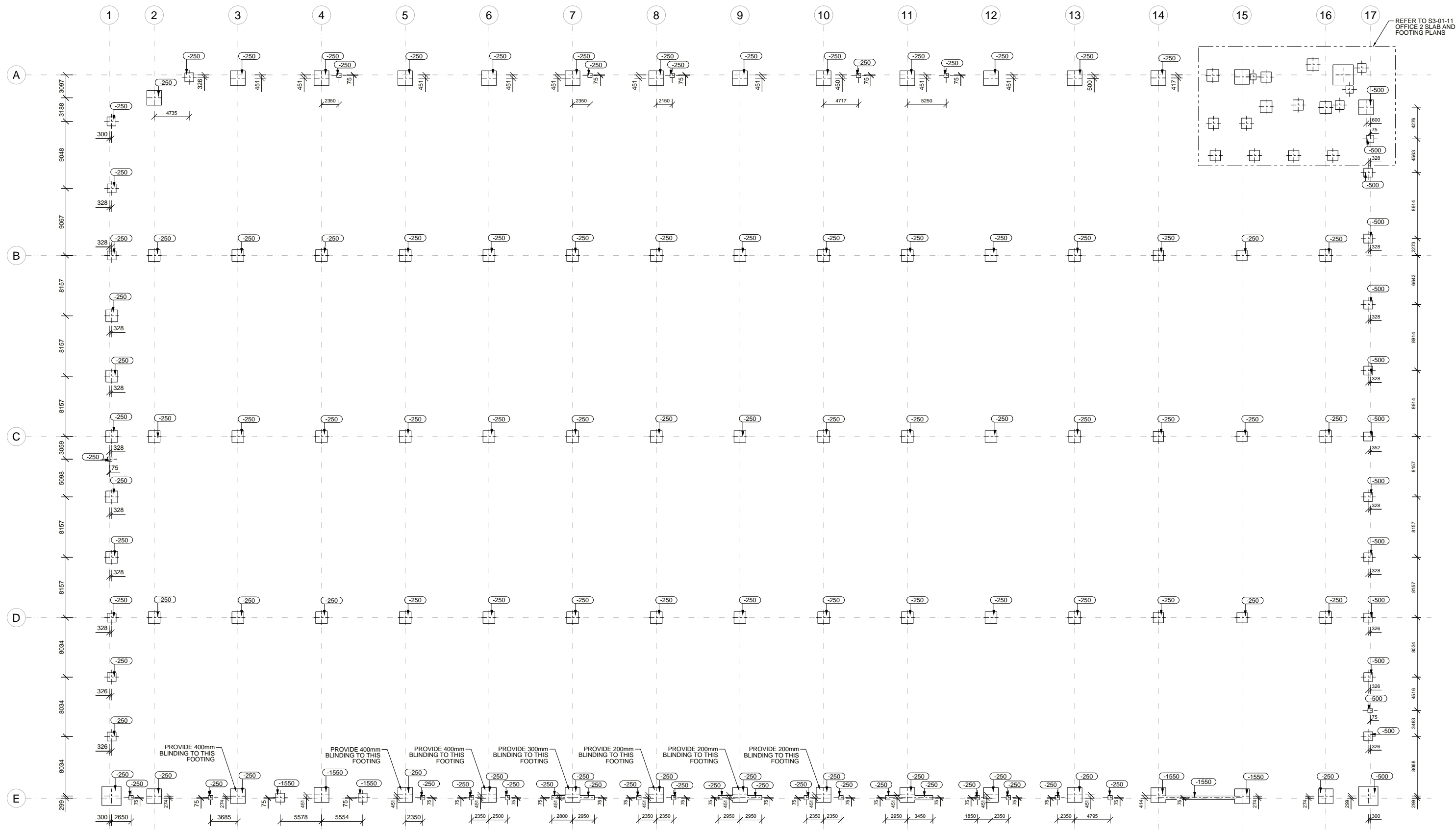
SUSPENDED SLABS	
MARK	THICKNESS (mm)
240	240

NOTES:
1. REFER PLANS FOR ALL MAIN REINFORCEMENT

RAFT BEAMS (RB)						
MARK (RB)	WIDTH (mm)	DEPTH (mm)	REINFORCEMENT			COMMENTS
			BOTTOM	TOP	CLOSED LIGATURES	
300*300D	300	300	3L11TM OR 3N12	-	-	

REFER TO STRUCTURAL SPECIFICATION DRAWING FOR ALL GENERAL NOTES

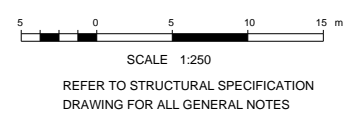
CLIENT		Rev	Issue Details	Issued	Date	PROJECT	CONSTRUCTION
Drawn: _____ Checked: _____ Approved: Vince Williams R.P.E.Q. 10145 On Behalf Of Tungsten Structures							CONCRETE SCHEDULES
SCALE AS NOTED AT A1							REV
							S0-00-11



FOOTING SETOUT PLAN
1:250

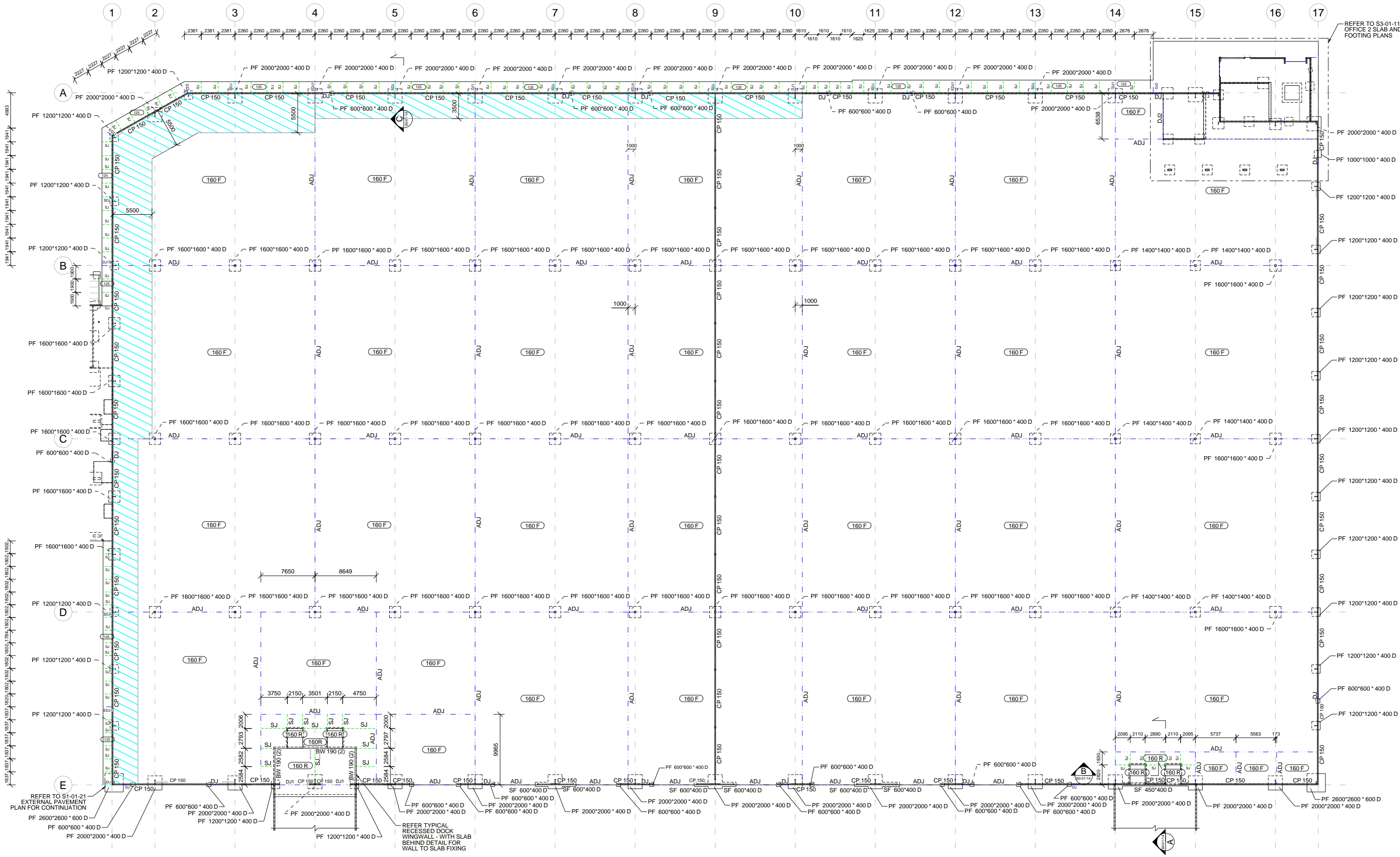
- NOTES:**
- FOOTINGS ARE DIMENSIONED FROM GRID TO MEMBER CENTRELINE
 - THIS IS A FOOTING SETOUT PLAN ONLY, NOT A COLUMN OR HD BOLT SETOUT PLAN. COLUMNS ARE NOT NECESSARILY CENTRED OVER FOOTINGS. REFER ARCHITECTURAL DRAWINGS FOR COLUMN SETOUT.

- LEGEND:**
- ⊕ INDICATES MEMBER CENTRELINE.
 - (-250) INDICATES TOP OF FOOTING LEVEL RELATIVE TO INTERNAL FFL



CLIENT		Rev	Issue Details	Issued	Date	PROJECT	CONSTRUCTION FOOTING SETOUT PLAN SCALE AS NOTED AT A1 REV
						Drawn:	
						Checked:	
						Approved: Vince Williams R.P.E.Q. 10145 On Behalf Of Tungsten Structures	

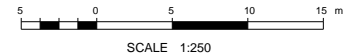
1/54 Vernon Tce, tungstenstructures.com.au
 Teneriffe, QLD 4005 ABN: 33 605 483 403



SLAB AND FOOTING PLAN
1:250

- NOTES:**
1. REFER TO ARCHITECTURAL CONCRETE SETOUT PLAN FOR ALL LEVELS, FALLS, STEPS, SETDOWNS AND HOBS.
 2. READ IN CONJUNCTION WITH CONCRETE SCHEDULES

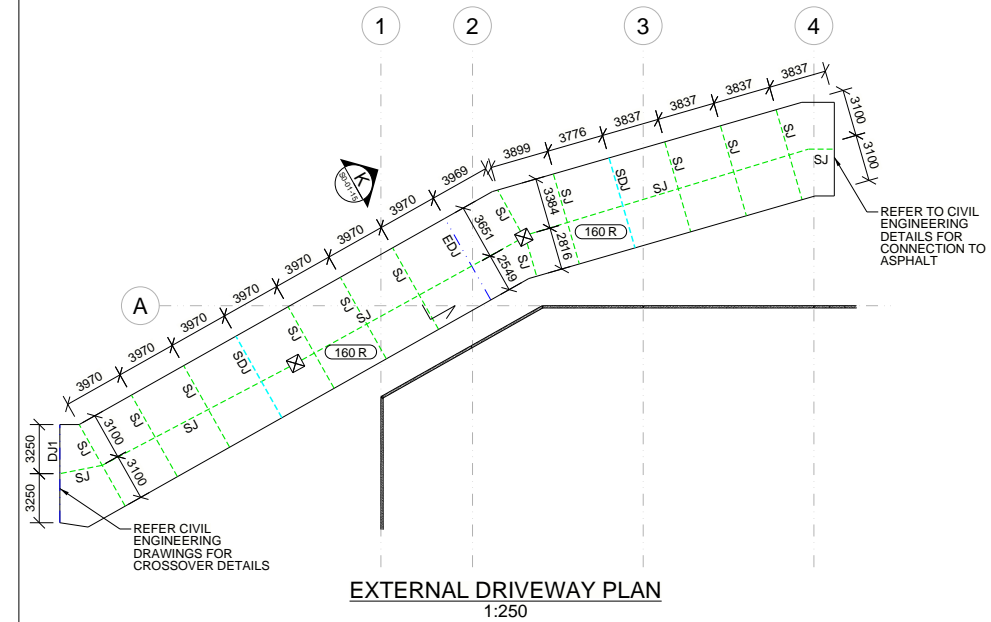
- LEGEND:**
- DJ ——— INDICATES DOWEL JOINT - REFER TO DETAILS
 - ADJ ——— INDICATES ARMoured DOWEL JOINT - REFER TO DETAILS
 - EDJ ——— INDICATES EXPANSION DOWEL JOINT - REFER TO SCHEDULES
 - SJ ——— INDICATES SAWCUT JOINT - REFER TO DETAILS
 - INDICATES TOP LAYER OF SL82 MESH



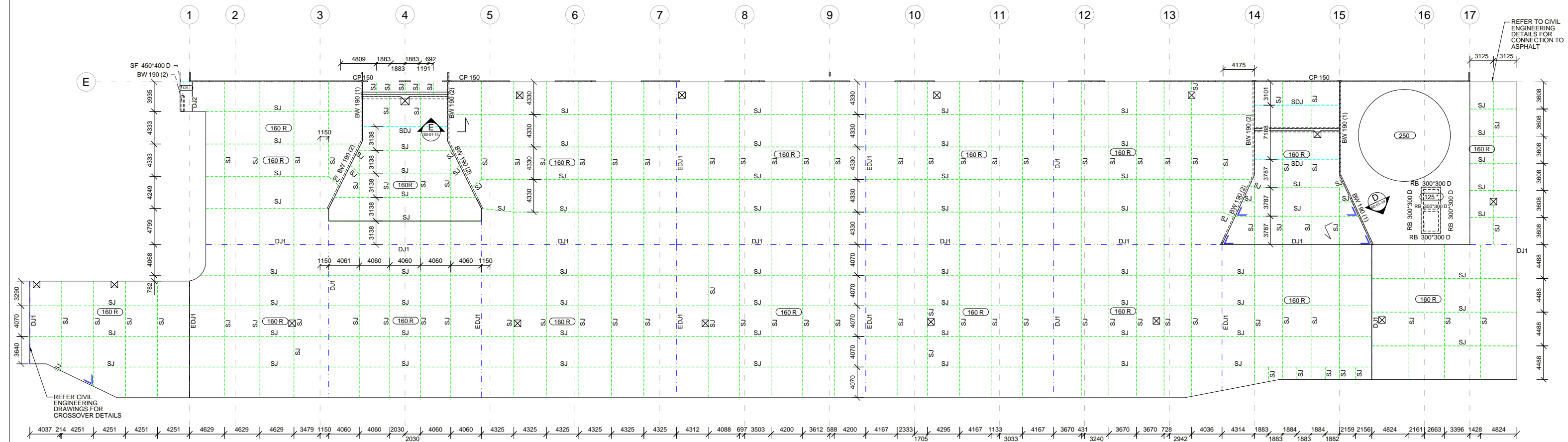
REFER TO STRUCTURAL SPECIFICATION DRAWING FOR ALL GENERAL NOTES

CLIENT		Rev	Issue Details	Issued	Date	PROJECT	<p>CONSTRUCTION</p> <p>SLAB & FOOTING PLAN</p> <p>SCALE AS NOTED AT A1 REV</p> <p>S1-01-11</p>
						Checked:	
						Approved:	
							Vince Williams R.P.E.Q. 10145 On Behalf Of Tungsten Structures

1/54 Vernon Tce, tungstenstructures.com.au
Teneriffe, QLD 4005 ABN: 33 605 483 403



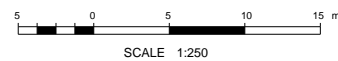
EXTERNAL DRIVEWAY PLAN
1:250



EXTERNAL PAVEMENT PLAN
1:250

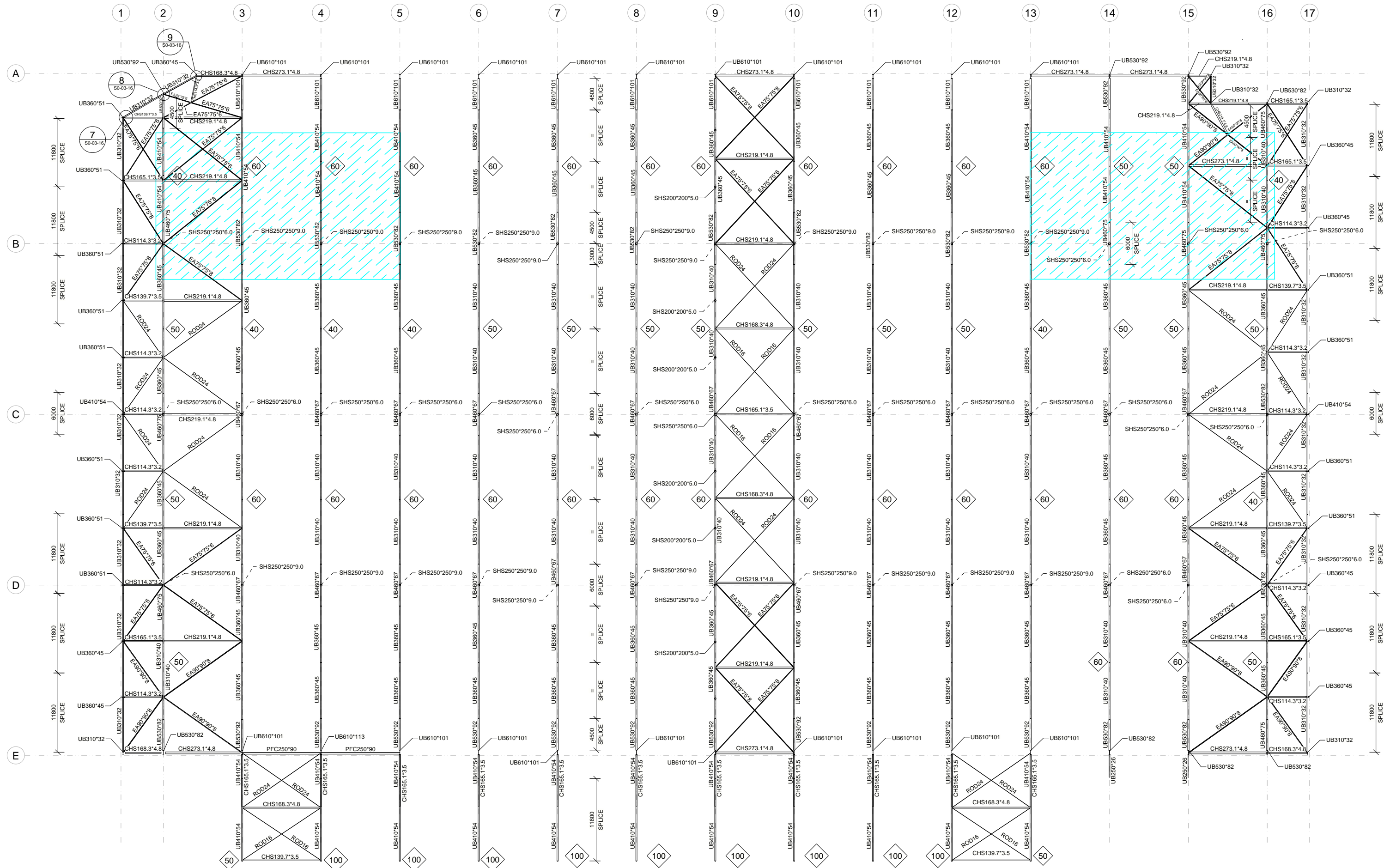
- NOTES:**
- REFER TO ARCHITECTURAL CONCRETE SETOUT PLAN FOR ALL LEVELS, FALLS, STEPS, SETDOWNS AND HOBBS.
 - READ IN CONJUNCTION WITH CONCRETE SCHEDULES

- LEGEND:**
- DJ --- INDICATES DOWEL JOINT - REFER TO DETAILS
 - ADJ --- INDICATES ARMoured DOWEL JOINT - REFER TO DETAILS
 - EDJ --- INDICATES EXPANSION DOWEL JOINT - REFER TO SCHEDULES
 - SJ --- INDICATES SAWCUT JOINT - REFER TO DETAILS
 - SDJ --- INDICATES SAWCUT DOWEL JOINT - REFER TO DETAILS
 - [Symbol] --- INDICATES LOAD BEARING ELEMENT UNDER
 - [Symbol] --- INDICATES 2N12 TRIMMERS. 1200 LONG





REFER TO STRUCTURAL SPECIFICATION
DRAWING FOR ALL GENERAL NOTES

CLIENT		Rev	Issue Details	Issued	Date	PROJECT	<p>CONSTRUCTION</p> <p>EXTERNAL PAVEMENT PLAN</p> <p>SCALE AS NOTED AT A1 REV</p> <p>S1-01-21</p>
<p>1/54 Vernon Tce, Tenterfe, QLD 4005 tungstenstructures.com.au ABN: 33 605 483 403</p>							



ROOF FRAMING PLAN
1:250

LEGEND:
 INDICATES MEMBER PRESET
 INDICATES LOCATION FOR SOLAR ARRAY PANELS LAID FLAT AGAINST ROOF SHEETING AND MAX 15kg/m²



REFER TO STRUCTURAL SPECIFICATION DRAWING FOR ALL GENERAL NOTES



1/54 Vernon Ter, Teneriffe, QLD 4005 tungstenstructures.com.au
 ABN: 33 605 483 403

Rev	Issue Details	Issued	Date

PROJECT	
Drawn:	
Checked:	
Approved:	
On Behalf Of Tungsten Structures	

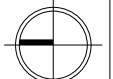
CONSTRUCTION

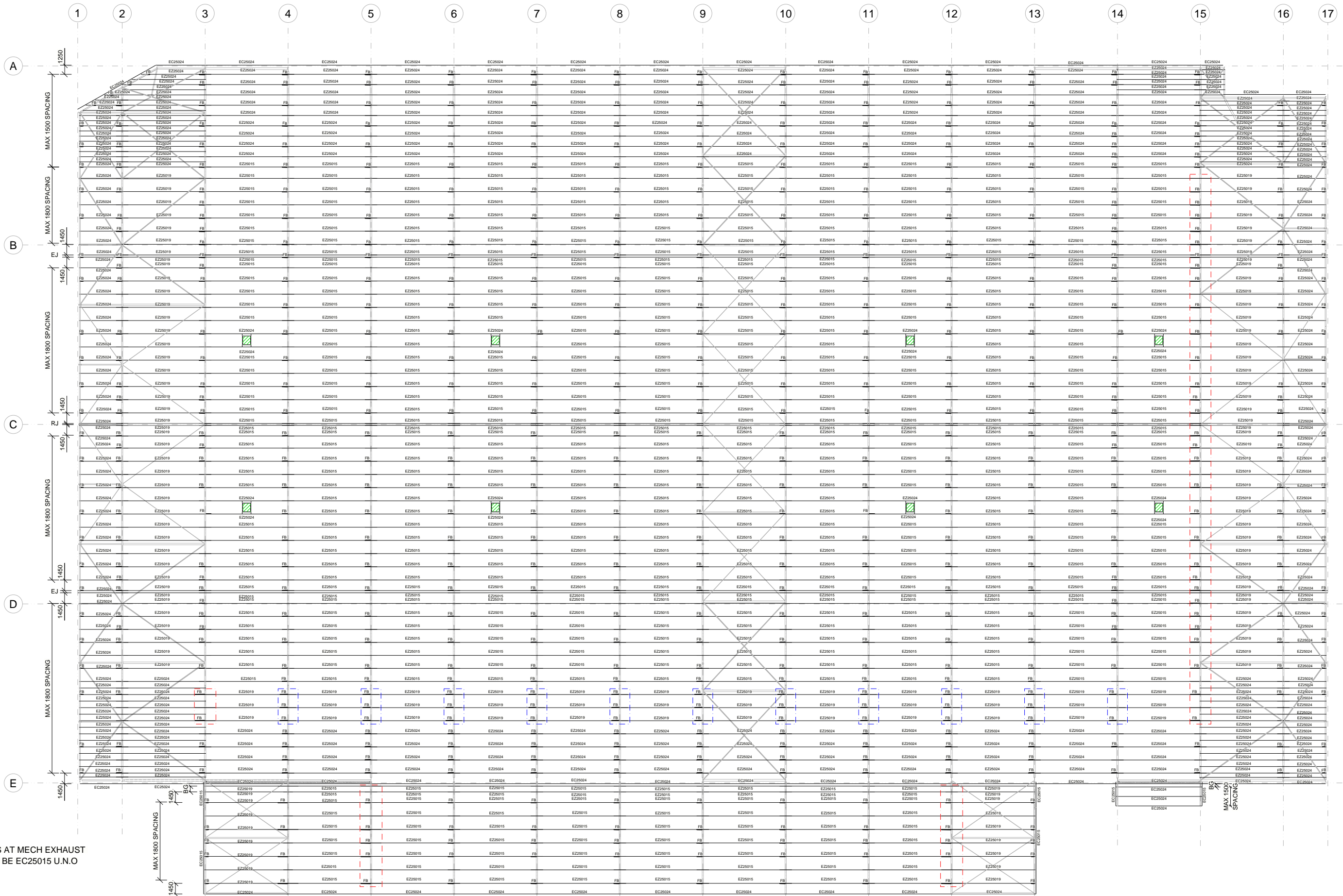
ROOF FRAMING PLAN

SCALE AS NOTED AT A1

REV

S1-03-11





NOTES:
 1. TRIMMER PURLINS AT MECH EXHAUST FAN LOCATION TO BE EC25015 U.N.O

LEGEND:
 FB INDICATES FLYBRACE
 BG INDICATES BOX GUTTER - REFER TO HYDRAULIC DRAWINGS
 EJ INDICATES ROOF EXPANSION JOINT
 RJ INDICATES ROOF RIDGE
 [Symbol] INDICATES 20% TOTAL LAP OVER SUPPORT OF LARGEST ADJACENT SPAN
 [Symbol] INDICATES 25% TOTAL LAP OVER SUPPORT OF LARGEST ADJACENT SPAN
 [Symbol] INDICATES MECHANICAL EXHAUST FAN. MAX 200kg INCLUDING DUCTS.
 [Symbol] REFER MECHANICAL ENGINEERS DRAWINGS FOR DETAILS



PURLIN FRAMING PLAN
 1:250



1/54 Vernon Tce, Tenterfield, QLD 4005 tungstenstructures.com.au ABN: 33 605 483 403

Rev	Issue Details	Issued	Date

PROJECT

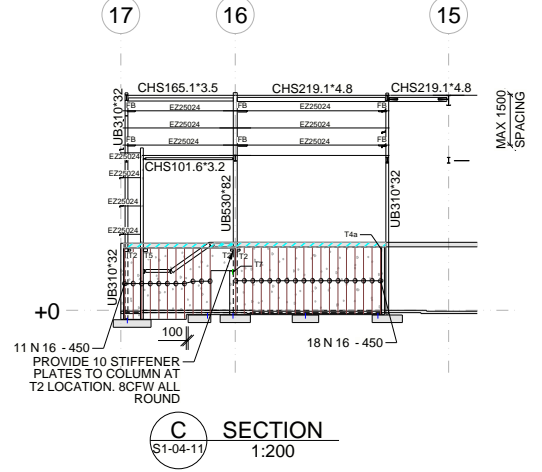
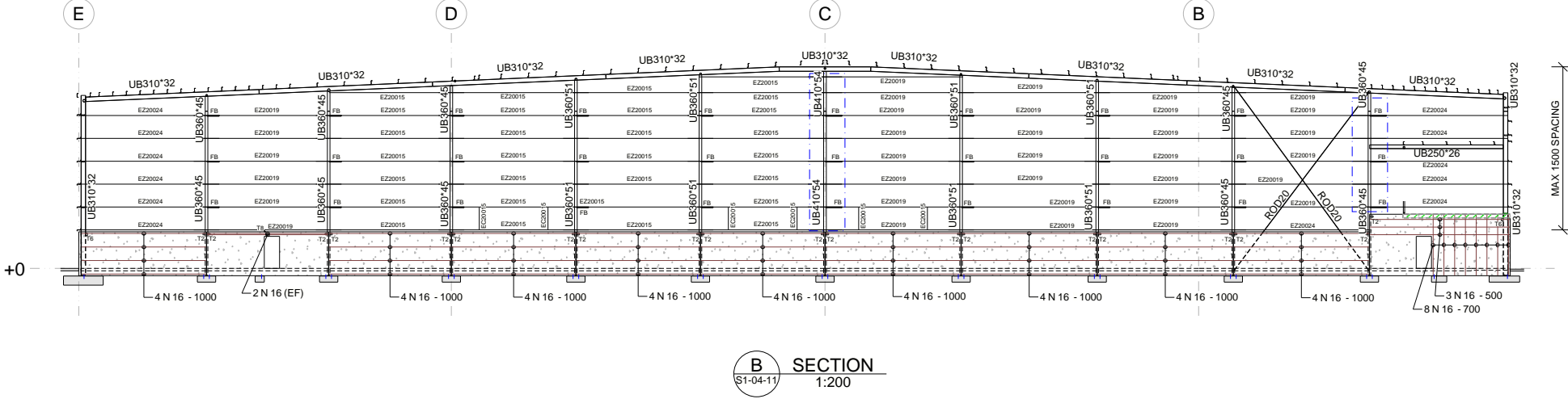
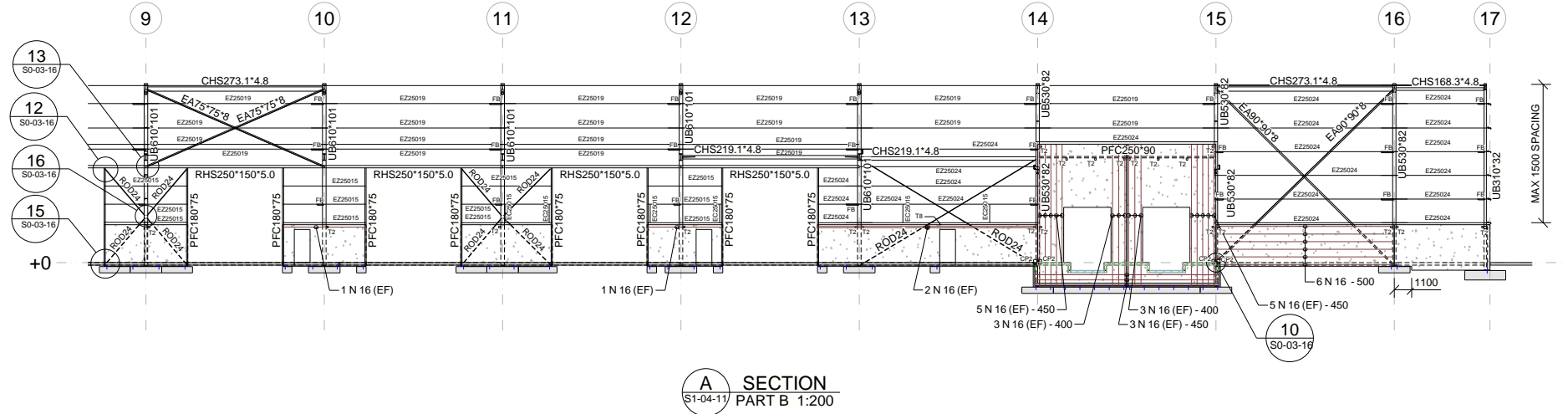
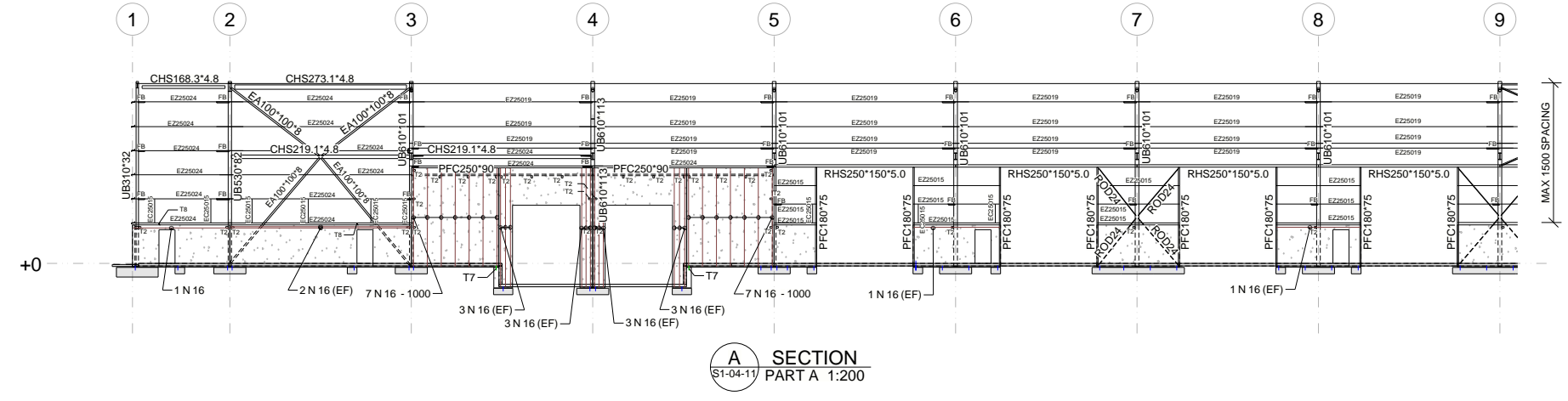
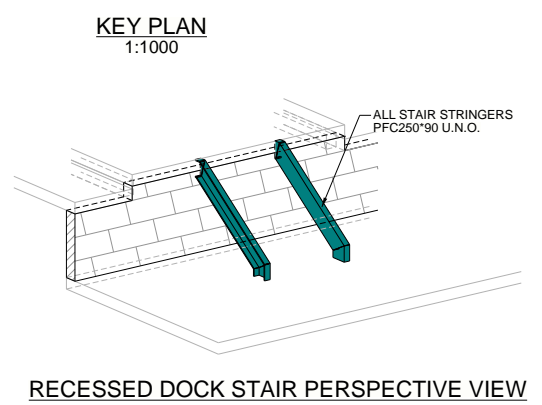
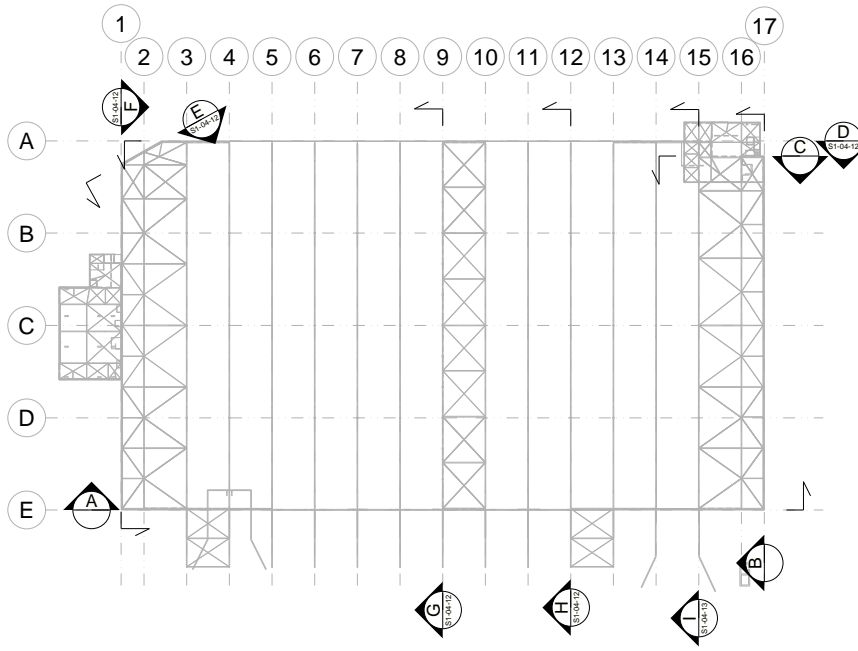
CONSTRUCTION

PURLIN FRAMING PLAN

SCALE AS NOTED AT A1

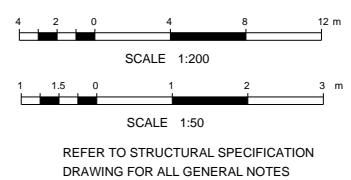
REV

S1-03-21

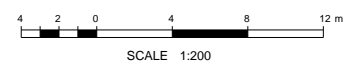
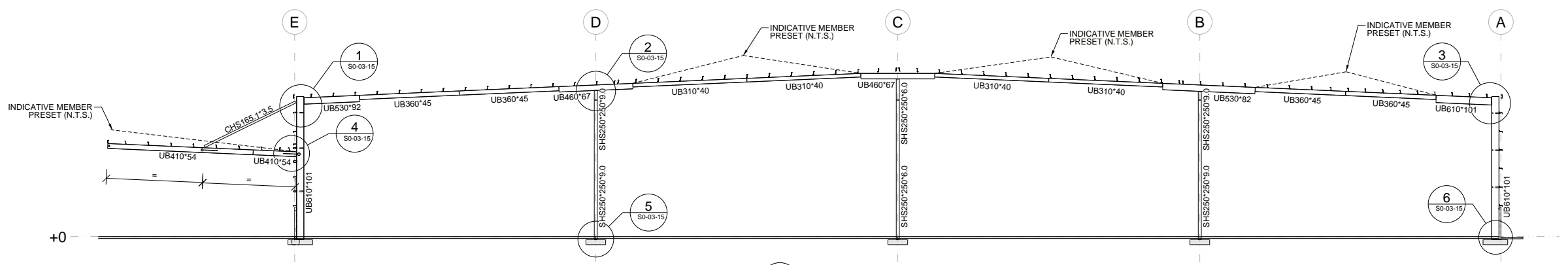
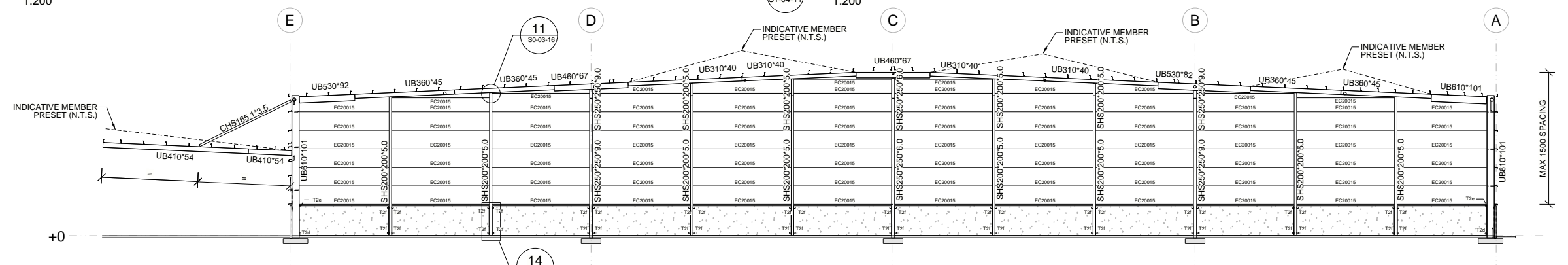
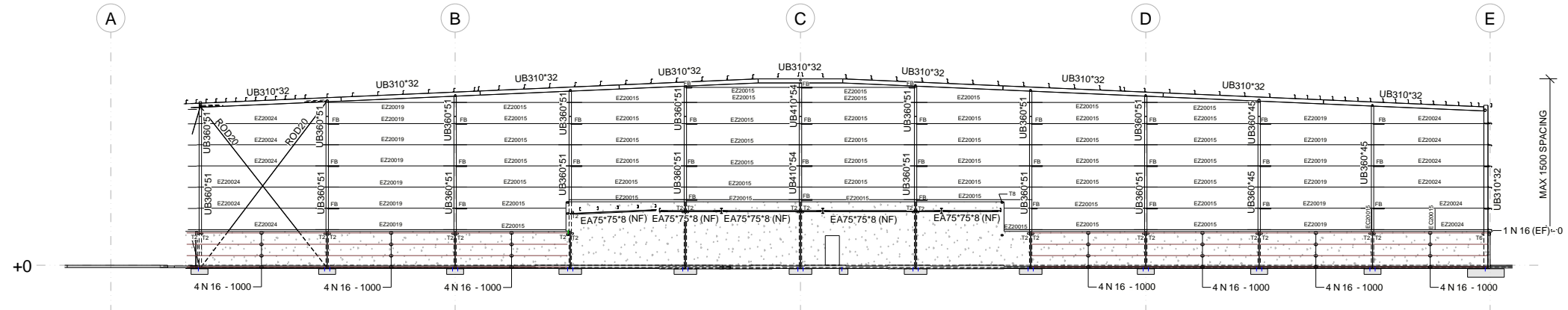
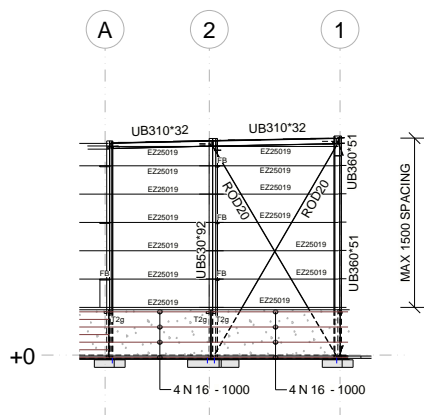
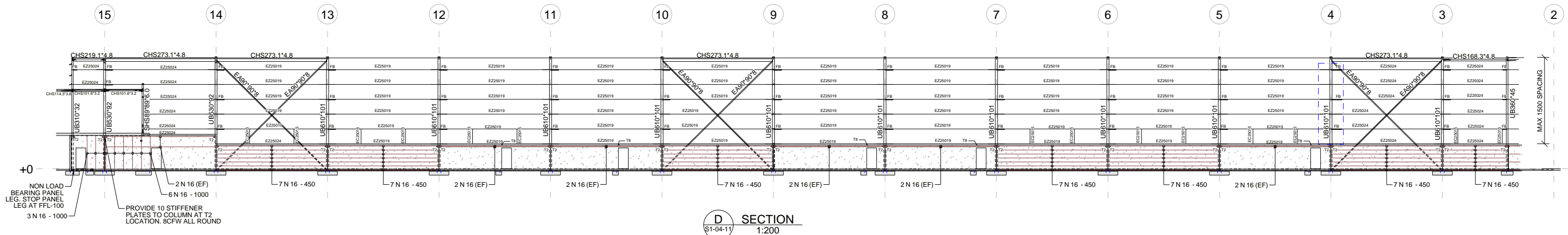


NOTES:
 1. INTERNAL COLUMNS >11,800 ARE SPICED 11,300 ABOVE THE BASE U.N.O.
 EXTERNAL COLUMNS >11,800 ARE SPICED 10,750 ABOVE THE BASE.

LEGEND:
 - INDICATES CONNECTION TYPE T1 - REFER TO CONCRETE PANEL DETAILS
 - INDICATES CONNECTION TYPE T7 - REFER TO CONCRETE PANEL DETAILS
 - FB INDICATES FLYBRACE - REFER TO STEEL DETAILS
 - T2 INDICATES PANEL CLIP TYPE - REFER TO CONCRETE PANEL DETAILS
 - NF INDICATES ELEMENT NEAR FACE PANEL
 - INDICATES 20% TOTAL LAP OVER SUPPORT OF LARGEST ADJACENT SPAN
 - INDICATES SLAB TO PANEL CONNECTION - REFER TO CONCRETE PANEL DETAILS
 - INDICATES SLAB TO PANEL OVER CONNECTION - REFER TO CONCRETE PANEL DETAILS

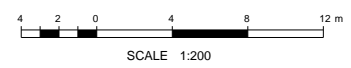
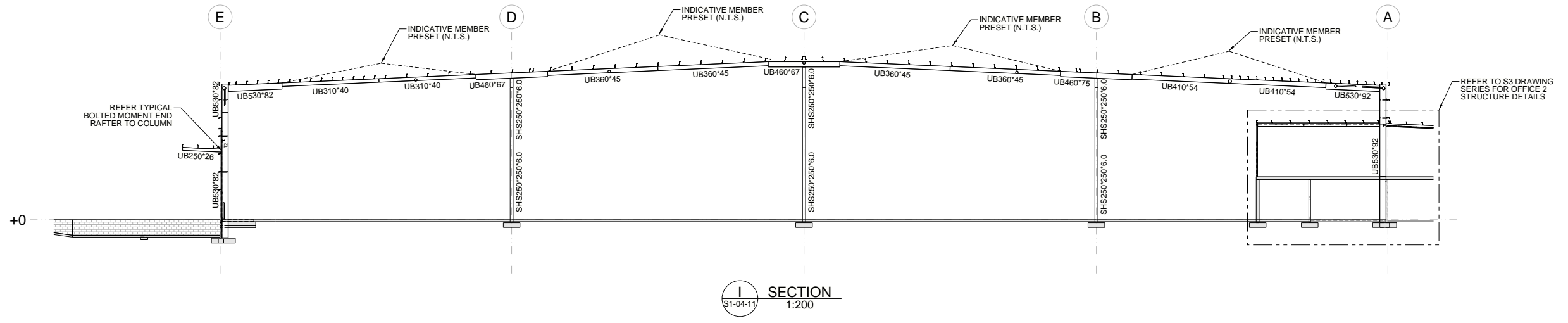


CLIENT		Rev	Issue Details	Issued	Date	PROJECT	CONSTRUCTION
						Drawn:	ELEVATIONS & SECTIONS SHEET 1 SCALE AS NOTED AT A1 REV
						Checked:	
REFER TO STRUCTURAL SPECIFICATION DRAWING FOR ALL GENERAL NOTES						Approved: Vince Williams R.P.E.Q. 10145 On Behalf Of Tungsten Structures	
1/54 Vernon Tce, Teneriffe, QLD 4005 tungstenstructures.com.au ABN: 33 605 483 403						S1-04-11	



REFER TO STRUCTURAL SPECIFICATION DRAWING FOR ALL GENERAL NOTES

CLIENT 1/54 Vernon Tce, Teneriffe, QLD 4005 tungstenstructures.com.au ABN: 33 605 483 403	Rev Issue Details Issued Date	PROJECT Drawn: Checked: Approved: Vince Williams R.P.E.Q. 10145 On Behalf Of Tungsten Structures	CONSTRUCTION ELEVATIONS & SECTIONS SHEET 2 SCALE AS NOTED AT A1 REV S1-04-12



REFER TO STRUCTURAL SPECIFICATION DRAWING FOR ALL GENERAL NOTES

CLIENT



1/54 Vernon Tce, Teneriffe, QLD 4005 tungstenstructures.com.au ABN: 33 605 483 403

Rev	Issue Details	Issued	Date

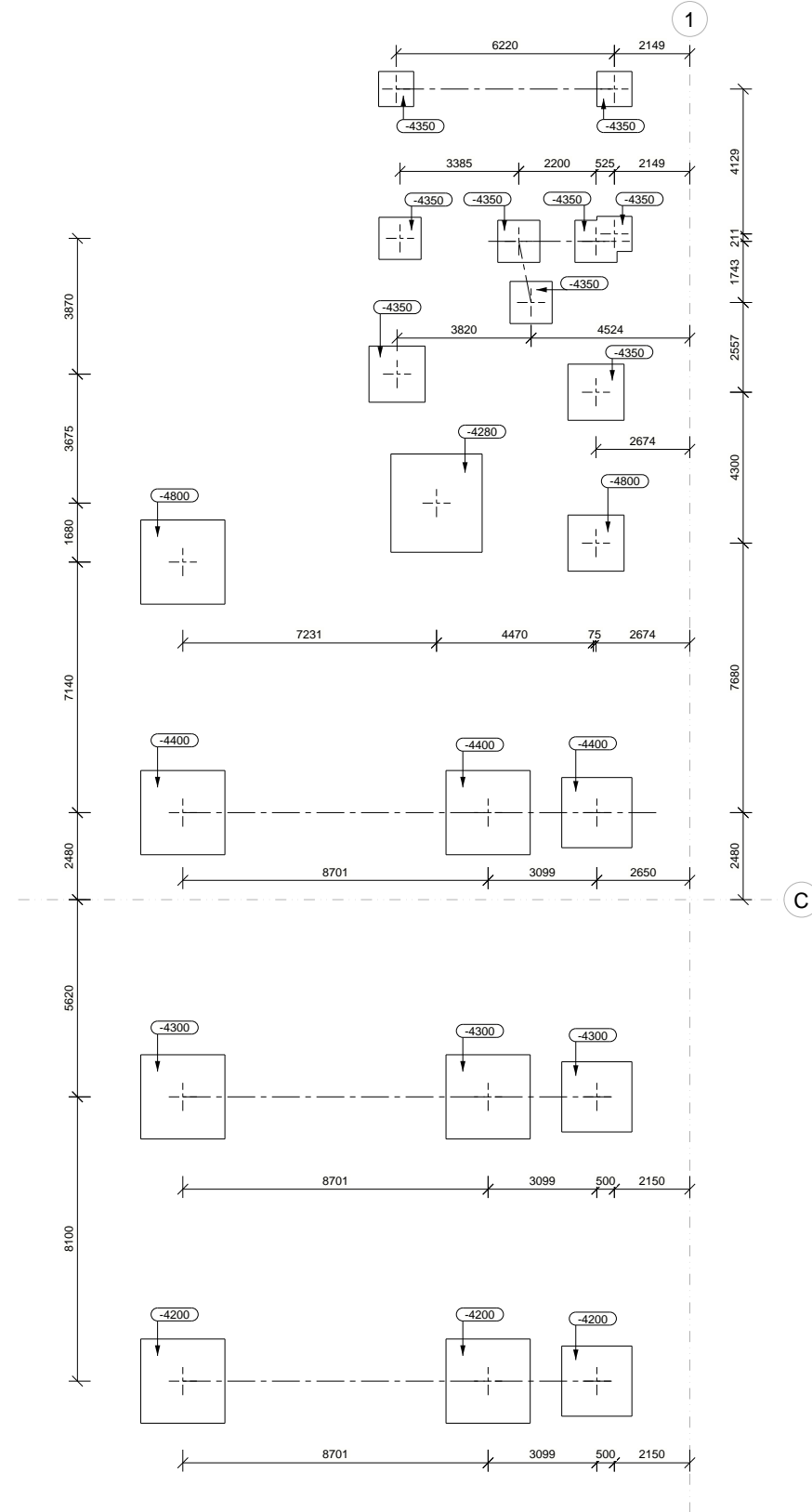
PROJECT	
Drawn:	
Checked:	
Approved:	Vince Williams R.P.E.Q. 10145 On Behalf Of Tungsten Structures

CONSTRUCTION

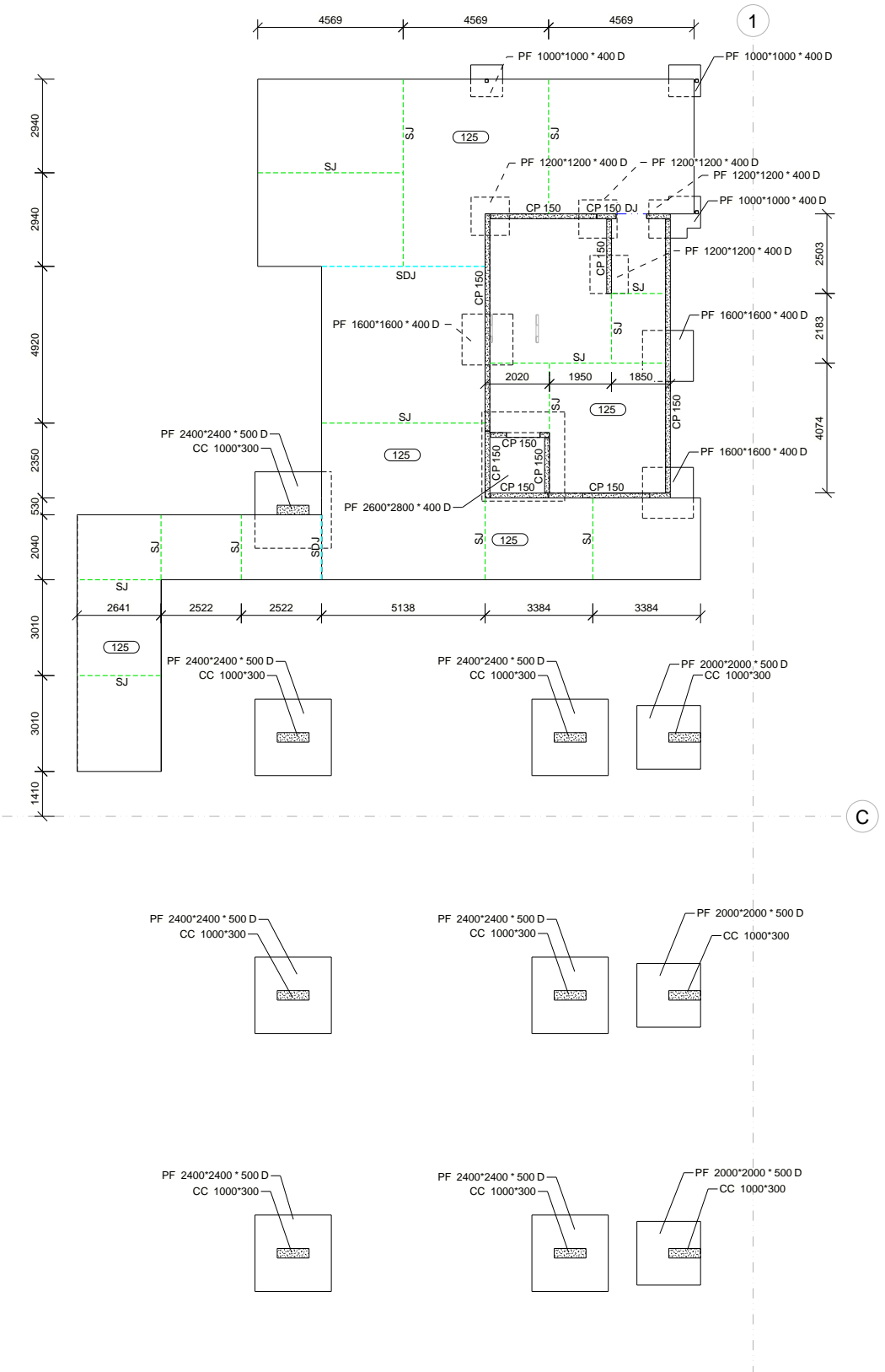
ELEVATIONS & SECTIONS SHEET 3

SCALE AS NOTED AT A1 REV

S1-04-13



OFFICE 1 FOOTING SETOUT PLAN
1:100



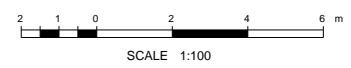
OFFICE 1 SLAB AND FOOTING PLAN
1:100

NOTES:

1. THIS IS A FOOTING SETOUT PLAN ONLY. NOT A COLUMN OR HD BOLT SETOUT PLAN. COLUMNS ARE NOT NECESSARILY CENTERED OVER FOOTINGS. REFER ARCHITECTURAL DRAWINGS FOR COLUMN SETOUT.
2. REFER TO ARCHITECTURAL CONCRETE SETOUT PLAN FOR ALL LEVELS, FALLS, STEPS, SETDOWNS AND HOBS.
3. READ IN CONJUNCTION WITH CONCRETE SCHEDULES.

LEGEND:

- + INDICATES MEMBER CENTRELINE.
- 200 INDICATES TOP OF FOOTING LEVEL RELATIVE TO INTERNAL FFL
- DJ INDICATES DOWEL JOINT - REFER TO DETAILS
- SJ INDICATES SAWCUT JOINT - REFER TO DETAILS
- SDJ INDICATES SAWCUT DOWELLED JOINT - REFER TO DETAILS



REFER TO STRUCTURAL SPECIFICATION
DRAWING FOR ALL GENERAL NOTES

CLIENT



Rev	Issue Details	Issued	Date

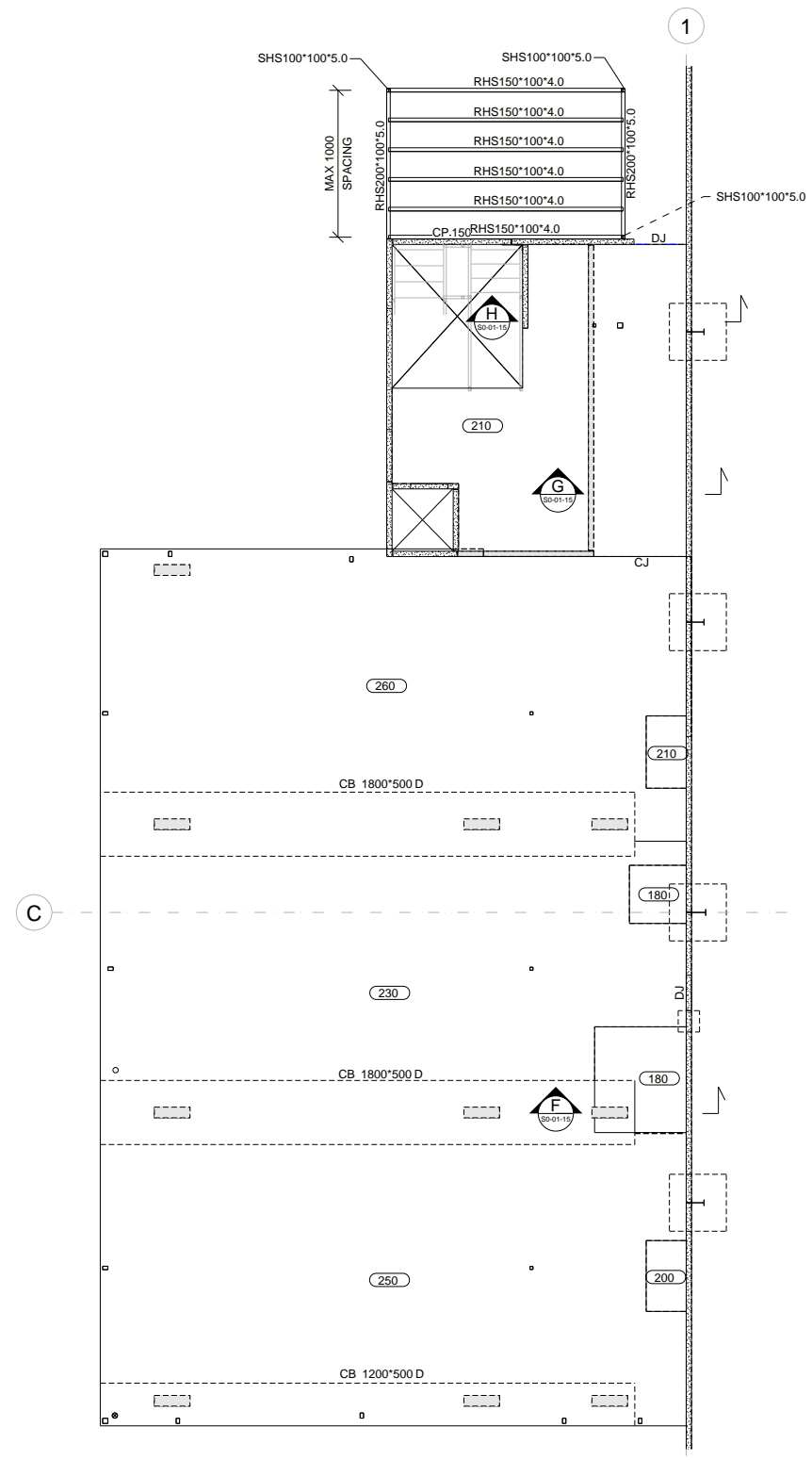
PROJECT	
Drawn:	
Checked:	
Approved:	Vince Williams R.P.E.Q. 10145 On Behalf Of Tungsten Structures

CONSTRUCTION

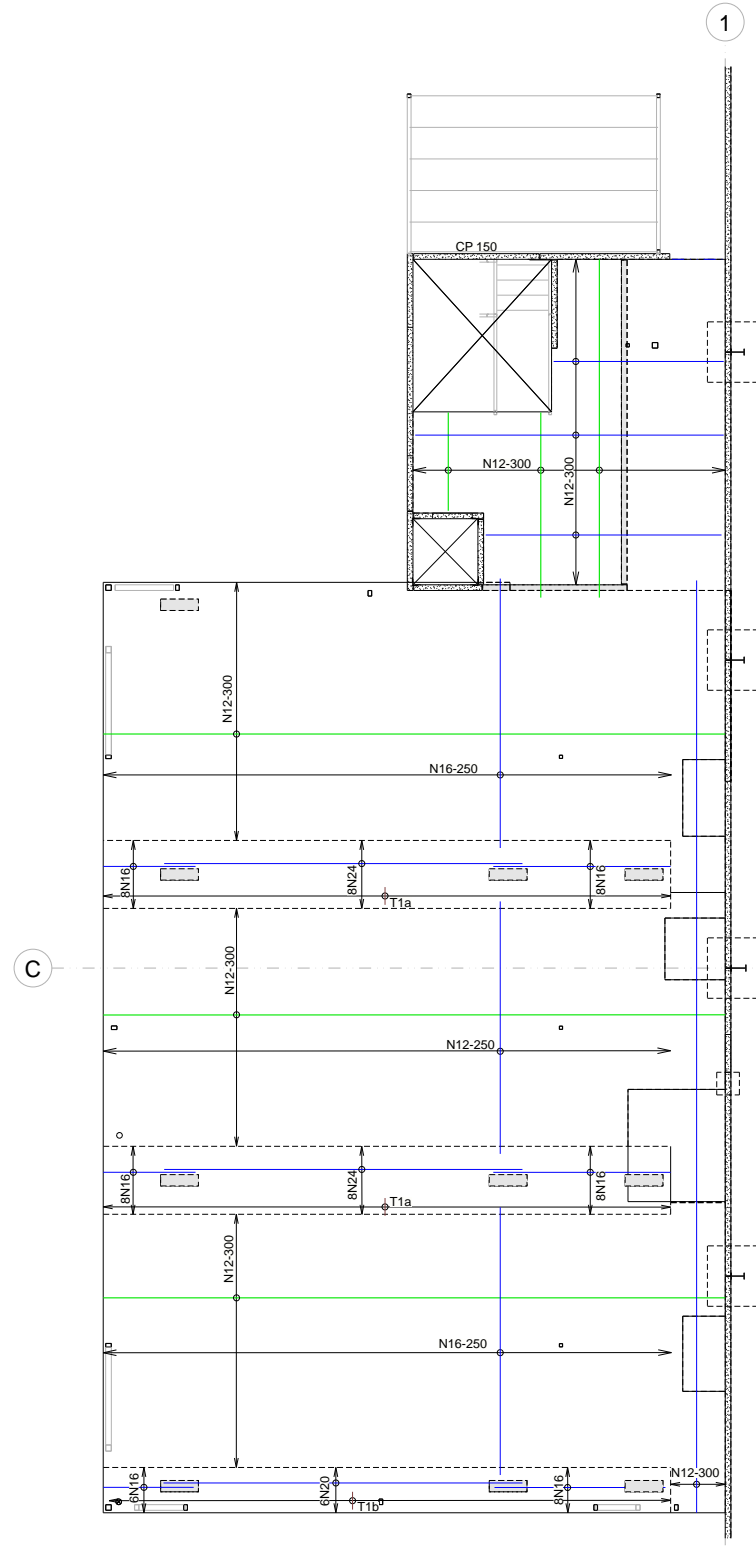
OFFICE 1
SLAB & FOOTING PLANS

SCALE AS NOTED AT A1 REV

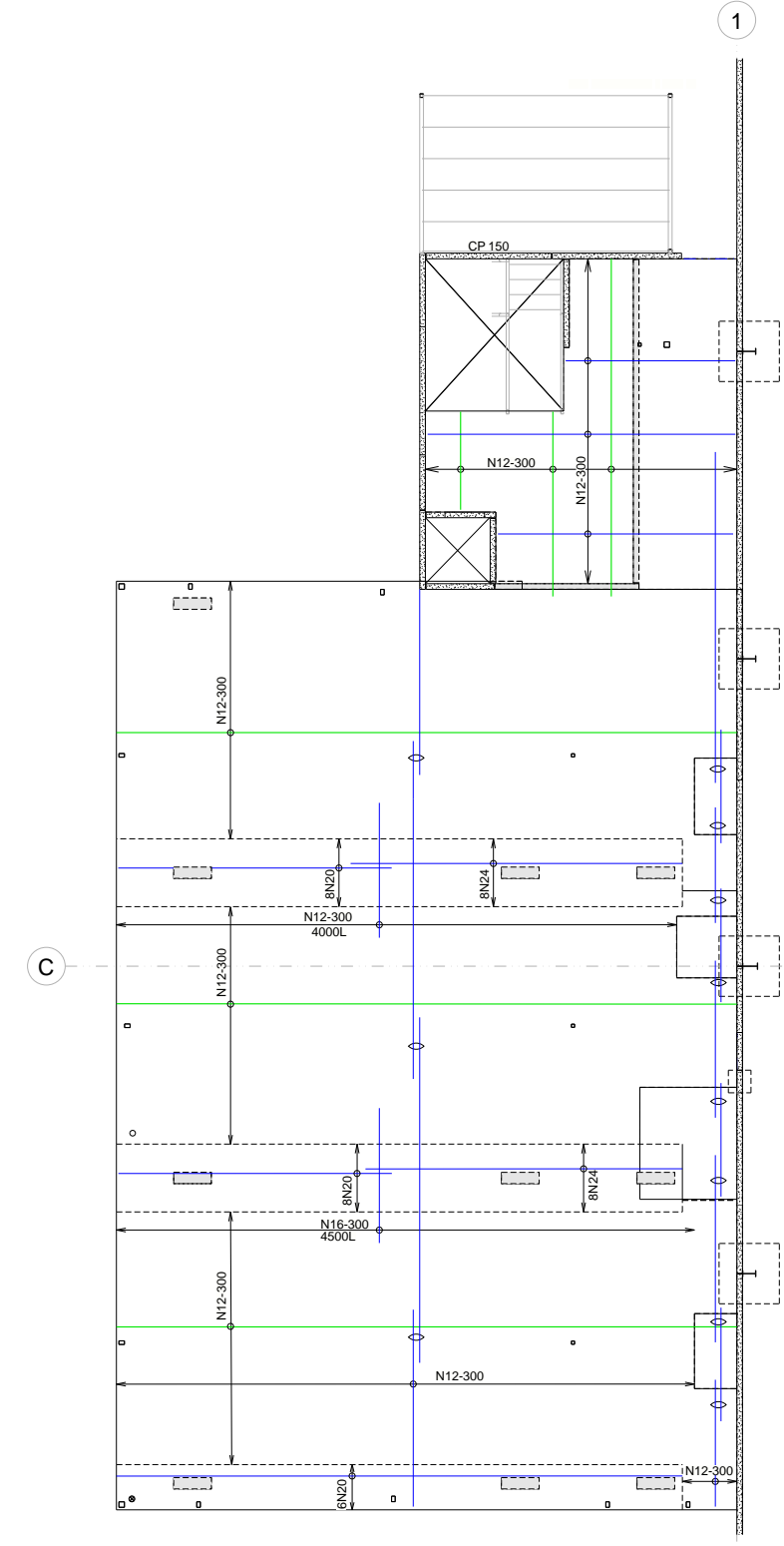
S2-01-11



OFFICE 1 FIRST FLOOR SLAB PLAN
1:100



FIRST FLOOR BOTTOM REINFORCEMENT PLAN
1:100



FIRST FLOOR TOP REINFORCEMENT PLAN
1:100

BAR LAYING SEQUENCE:

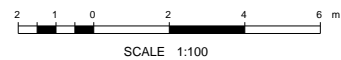
- C LAYER LAID 2ND
- B LAYER LAID 3RD
- D LAYER LAID 1ST
- A LAYER LAID 4TH

NOTES:

1. REINFORCEMENT BAR COGS AND HOOKS ARE NOT SHOWN ON PLAN, REFER DETAILS

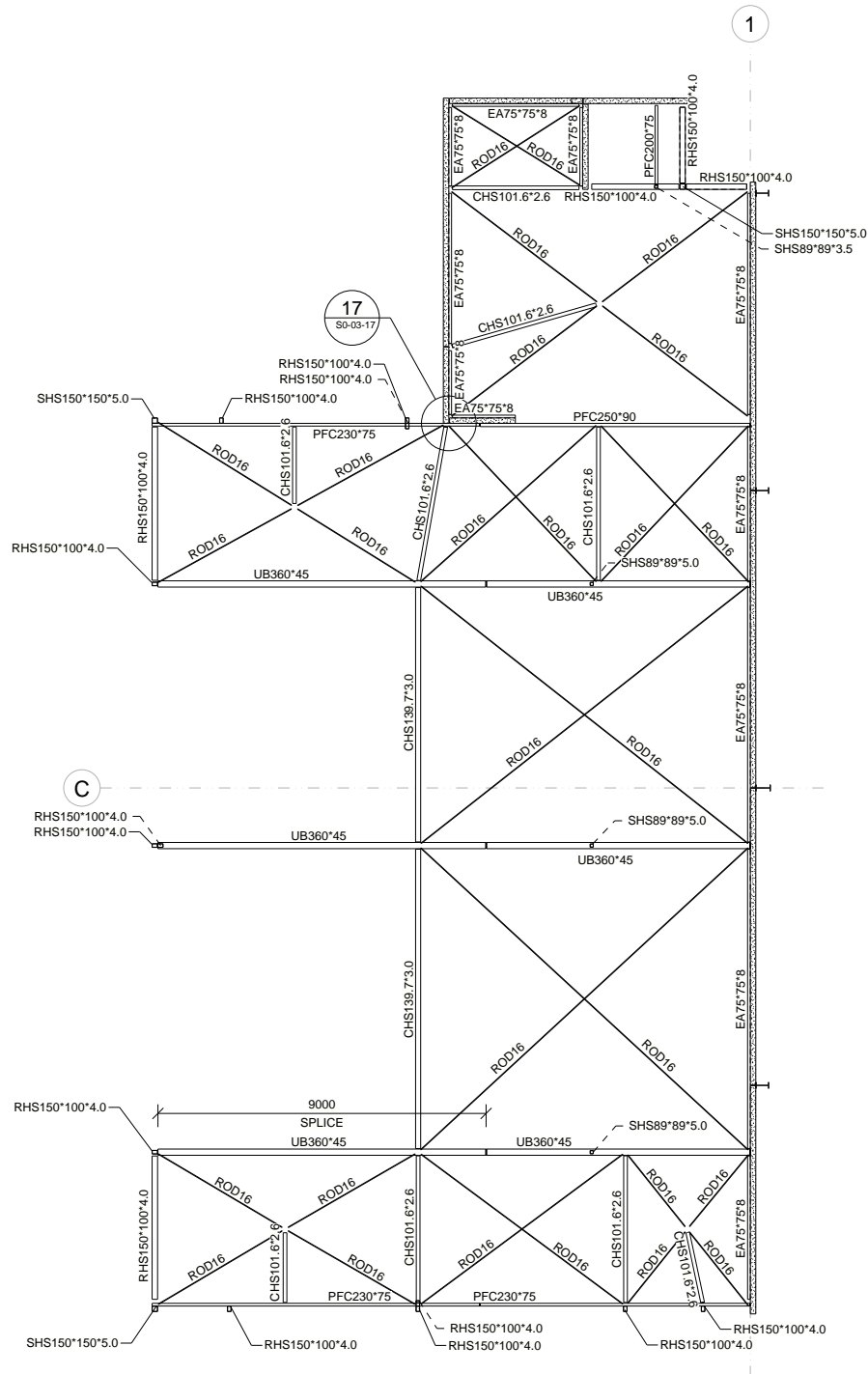
LEGEND:

- INDICATES LOAD BEARING ELEMENT UNDER
- INDICATES BEAM LIG TYPE - REFER TO SUSPENDED SLAB DETAILS
- INDICATES DOWEL JOINT - REFER TO DETAILS
- INDICATES CONSTRUCTION JOINT - REFER TO DETAILS

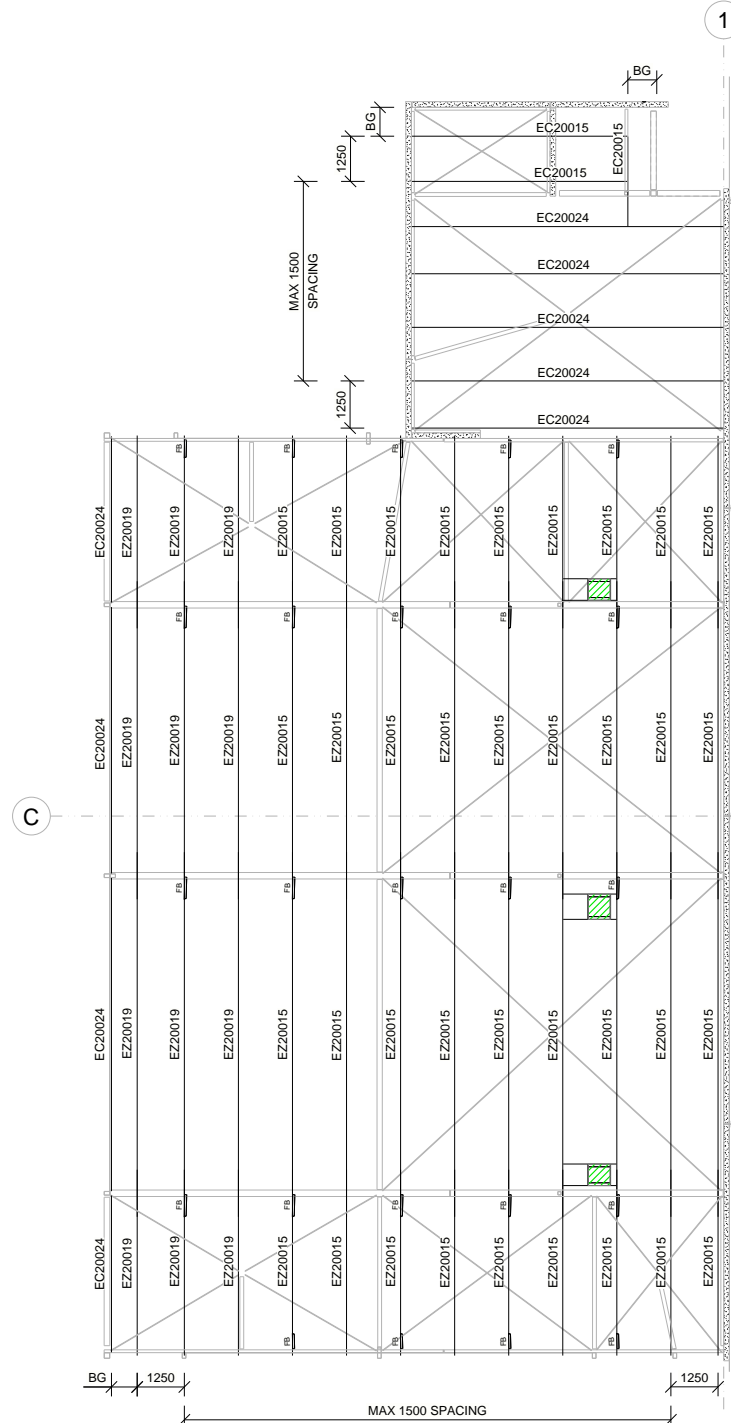


SCALE 1:100
REFER TO STRUCTURAL SPECIFICATION
DRAWING FOR ALL GENERAL NOTES

CLIENT	 1/54 Vernon Tce, Teneriffe, QLD 4005 tungstenstructures.com.au ABN: 33 605 483 403	Rev	Issue Details	Issued	Date	PROJECT	CONSTRUCTION OFFICE 1 FIRST FLOOR GA & REINFORCEMENT PLANS SCALE AS NOTED AT A1 REV
							S2-02-21



OFFICE 1 ROOF FRAMING PLAN
1:100




OFFICE 1 PURLIN FRAMING PLAN
1:100

NOTES:

- 1. TRIMMER PURLINS AT MECH EXHAUST FAN LOCATION TO BE EC20015 U.N.O.

LEGEND:

- FB INDICATES FLYBRACE
- BG INDICATES BOX GUTTER - REFER TO HYDRAULIC DRAWINGS
-  INDICATES MECHANICAL EXHAUST FAN. MAX 200kg INCLUDING DUCTS. REFER MECHANICAL ENGINEERS DRAWINGS FOR DETAILS



REFER TO STRUCTURAL SPECIFICATION
DRAWING FOR ALL GENERAL NOTES

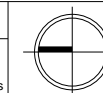
CLIENT



1/54 Vernon Tce, Teneriffe, QLD 4005 tungstenstructures.com.au
ABN: 33 605 483 403

Rev	Issue Details	Issued	Date

PROJECT	
Drawn:	
Checked:	
Approved:	
Vince Williams R.P.E.Q. 10145 On Behalf Of Tungsten Structures	

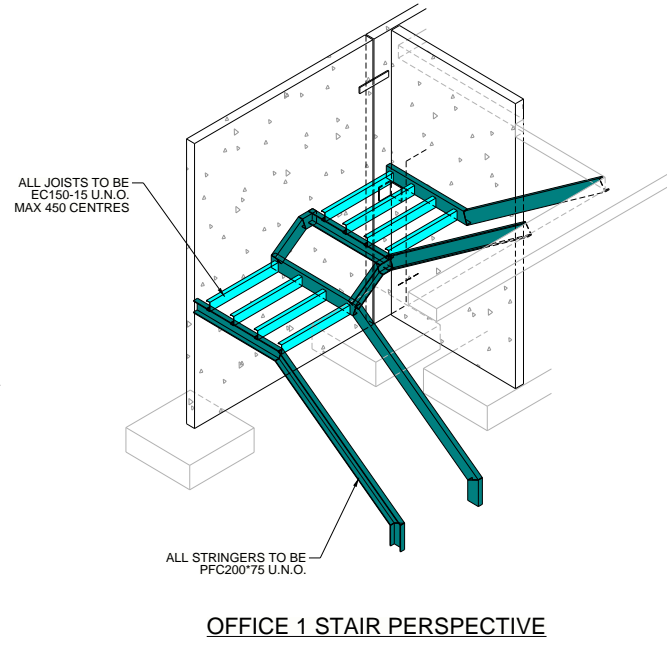
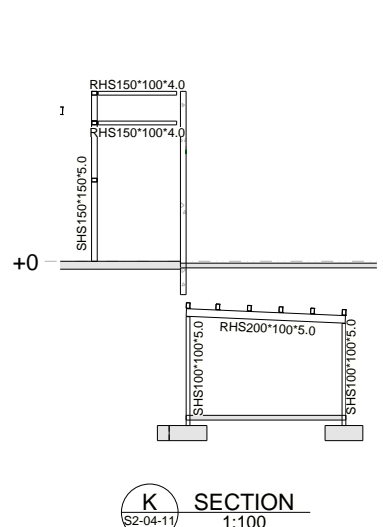
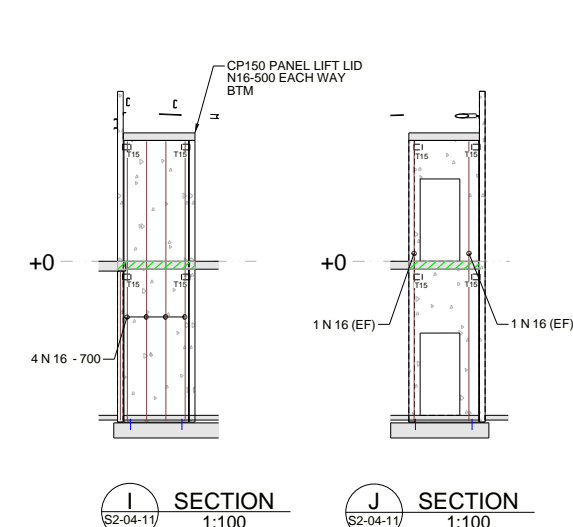
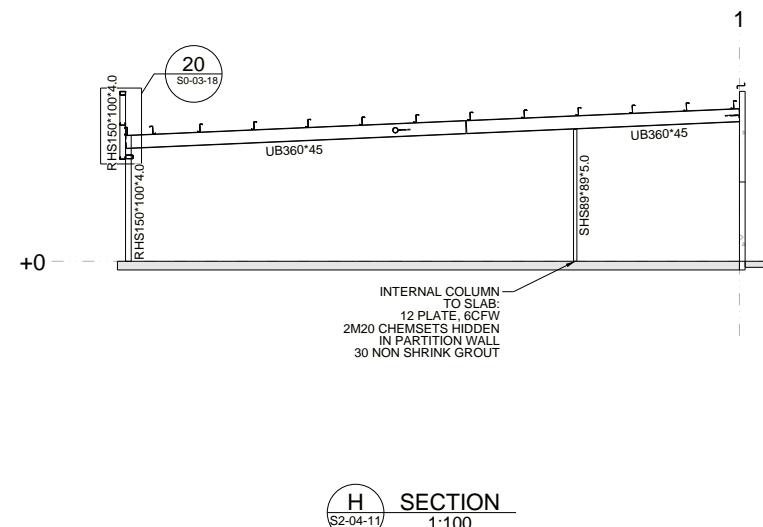
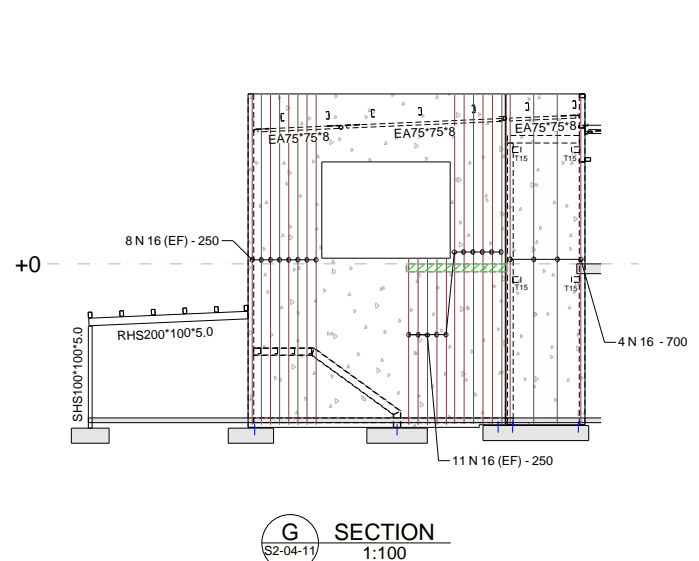
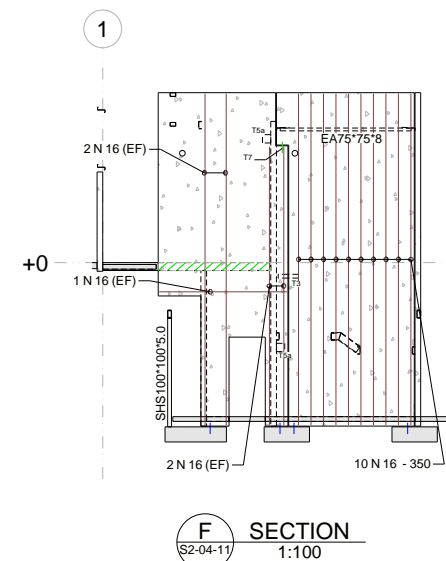
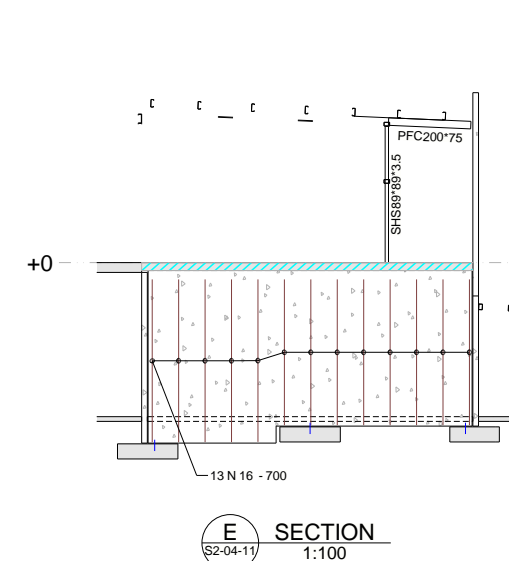
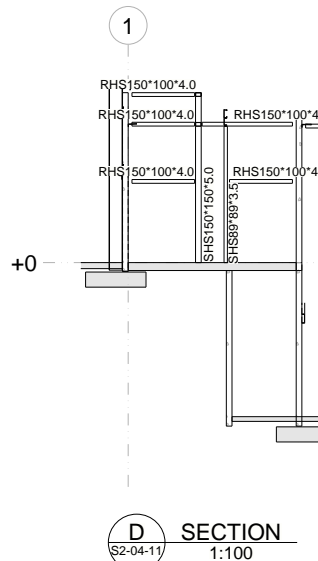
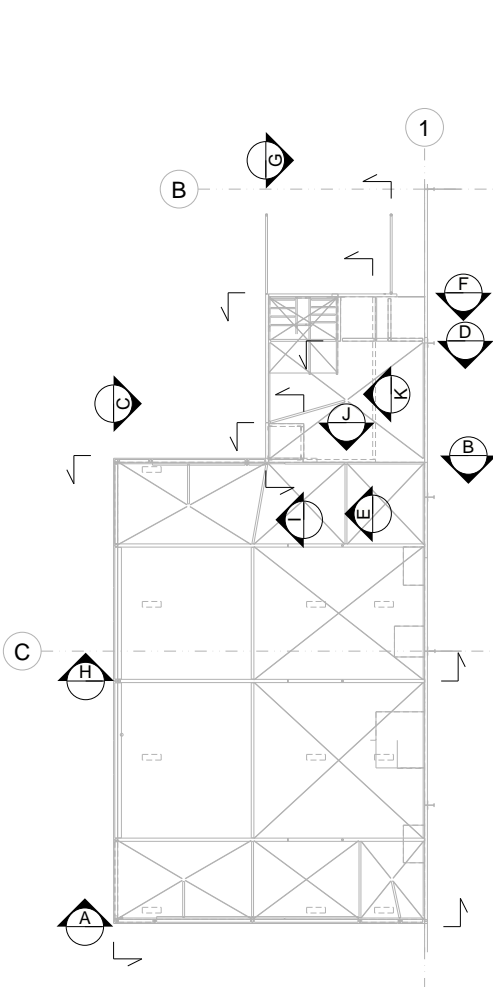
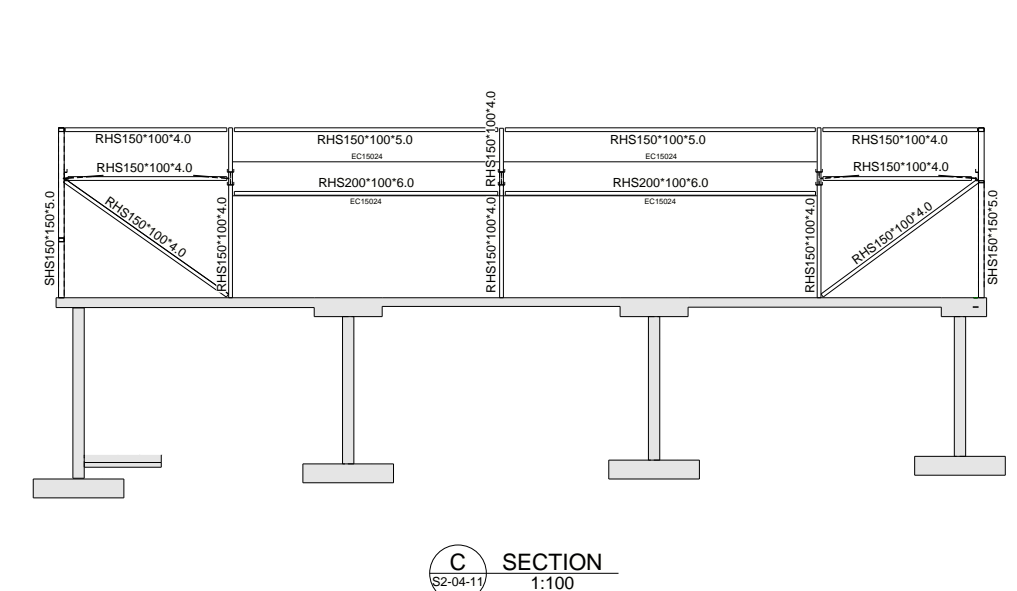
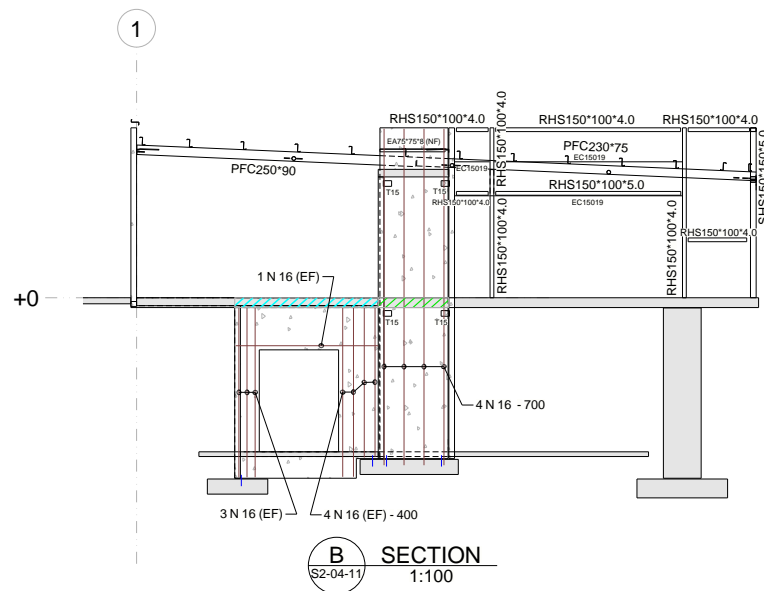
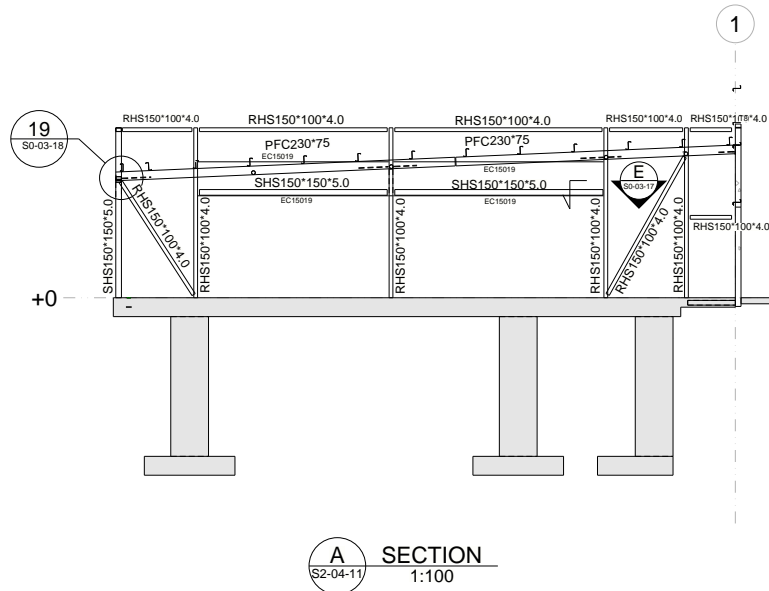


CONSTRUCTION

OFFICE 1 FRAMING PLANS

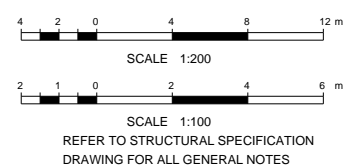
SCALE AS NOTED AT A1 REV

S2-03-11



LEGEND:

- | INDICATES CONNECTION TYPE T1 - REFER TO CONCRETE PANEL DETAILS
- ▨ INDICATES SLAB TO PANEL CONNECTION - REFER TO CONCRETE PANEL DETAILS
- ▨ INDICATES SLAB TO PANEL OVER CONNECTION - REFER TO CONCRETE PANEL DETAILS
- NF INDICATES ELEMENT NEAR FACE PANEL



CLIENT		Rev	Issue Details	Issued	Date	PROJECT	CONSTRUCTION OFFICE 1 ELEVATIONS & SECTIONS SCALE AS NOTED AT A1 REV
1/54 Vernon Tce, Tenterfield, QLD 4005 tungstenstructures.com.au ABN: 33 605 483 403							